

The Exclusive Two Finger Flange

Patent #: 5,937,450



- Flush fit
- Redesigned to fit oblong horns
- Made of cast iron
- Pushes easily into cast iron or Schedule 40 DWV pipe
- No tear out or caulking required
- ASTM C-564 rubber gasket
- 3" x 2", 4" x 2" and 4" x 3": for areas with the bend close to the flange
- 3" x 4", 4" x 4" and 4" x 6": for areas without the bend close to the flange or broken pipe



PART NO.	DESCRIPTION	CTN QTY
C47320	3" x 2"	8
C47340	3" x 4"	4
C47420	4" x 2"	8
C47430	4" x 3"	4
C47440	4" x 4"	4
C47460	4" x 6"	2

Inside Caulk Closet Flange



- Notched and slotted
- Inside caulk connection



Service Weight

PART NO.	DESCRIPTION	CTN QTY
C41410	4" x 1"	10
C41411	4" x 1-1/2"	10
C41420	4" x 2"	8
C41421	4" x 2-1/2"	8
C41430	4" x 3"	6
C41440	4" x 4"	4
C41460	4" x 6"	2
Extra Heavy - 5" I.D. - NO BEAD		
C42421	4" x 2-1/2"	8
C42440	4" x 4"	4
C42460	4" x 6"	2

Inside Caulk Reducing Closet Flange



- Notched and slotted



PART NO.	DESCRIPTION	CTN QTY
C45433	4" inlet x 3" outlet x 3" depth	6

No Caulk Closet Flange w/Test Cap

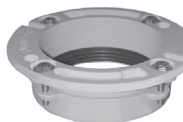


- Slotted
- Stainless bolts and washers

PART NO.	DESCRIPTION	CTN QTY
C40425	4" x 2" No Caulk	8

"Code Blue" No Caulk Closet Flange

Parts marked * are

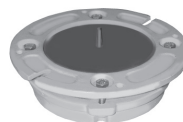


- Four stainless bolts and washers
- Neoprene gasket meets ASTM C564
- Ideal for both repair and new construction
- Easy to install- reduces installation time by 80%
- Push over cast iron or plastic pipe, anchor to floor and tighten bolts



PART NO.	DESCRIPTION	CTN QTY
C40320	3" pipe x 2" depth	8
C40420*	4" pipe x 2" depth	8
C40430*	4" pipe x 3" depth	4
C40440*	4" pipe x 4" depth	4

"Code Blue" No Caulk Closet Flange w/Test Cap



- Cut out neoprene test cap
- Stainless steel bolts



PART NO.	DESCRIPTION	CTN QTY
C40500	4" x 2"	8
C40503	3" x 3"	8

No Hub Closet Flange

Parts marked * are



- Notched and slotted



PART NO.	DESCRIPTION	CTN QTY
C46331*	3" x 3-1/2"	6
C46431	4" x 3-1/2"	6
C46351*	3" x 5-1/2"	6
C46451	4" x 5-1/2"	6